

UW – Madison Weed Science Renz Lab

Does application timing or adding other herbicides influence control of box elder with TerraVue and Vastlan?

Dr. Mark Renz, Professor and Extension Weed Specialist

mrenz@wisc.edu – 357 Moore Hall, 1575 Linden Drive, Madison, WI, 53706

Travis Wilson, Research Specialist

tiwilson9@wisc.edu – 236 Moore Hall, 1575 Linden Drive, Madison, WI, 53706

Objective:

Determine if timing of application or the addition of herbicides to TerraVue and Vastlan improves control of box elder.

Summary:

Box elder is a common native woody plant in many ecosystems. TerraVue (aminopyralid + florypyrauxifen) and Vastlan (triclopyr) are common herbicides used to control box elder, but control can be difficult. Application timing (spring vs fall) or addition of other herbicides may improve control. An experiment was established to evaluate these factors. In late August of 2024 Vastlan and TerraVue alone or mixed with Method (aminocyclopyrachlor), Cimmaron (metsulfuron) and Arsenal (imazapyr) were applied. The same treatments will be applied in the spring of 2025. Initial results 38 days after treatment (DAT) showed high levels of foliar injury (>85%) but low levels of defoliation (<25%) for all treatments. Evaluation of control in the summer of 2025 will be needed to determine if application timing or addition of herbicides improve control of box elder.

Herbicide Treatments

Treatment Number	Treatment	Rate	Application Timing
1	Nontreated Control (NTC)	-	-
2	TerraVue Vastlan LIBERATE	0.18 oz /gal 2% v/v 0.5% v/v	A
3	TerraVue Vastlan MSO	0.18 oz /gal 2% v/v 0.1% v/v	A
4	TerraVue Vastlan Arsenal LIBERATE	0.18 oz/gal 2% v/v 0.5% v/v 0.5% v/v	A
5	TerraVue Vastlan CIMARRON LIBERATE	0.18 oz/gal 2% v/v 0.04 oz/ gal 0.5% v/v	A
6	TerraVue Vastlan Method 240 SL LIBERATE	0.18 oz/gal 2% v/v 0.25% v/v 0.5% v/v	A
7	TerraVue Vastlan LIBERATE	0.18 oz /gal 2% v/v 0.5% v/v	B
8	TerraVue Vastlan MSO	0.18 oz /gal 2% v/v 0.1% v/v	B
9	TerraVue Vastlan Arsenal LIBERATE	0.18 oz/gal 2% v/v 0.5% v/v 0.5% v/v	B
10	TerraVue Vastlan CIMARRON LIBERATE	0.18 oz/gal 2% v/v 0.04 oz/ gal 0.5% v/v	B
11	TerraVue Vastlan Method 240 SL LIBERATE	0.18 oz/gal 2% v/v 0.25% v/v 0.5% v/v	B

Notes

The second application timing will be done in spring of 2025.

Experiment was done along walking path with mostly undesirable plants (elm spp., burdock, and Canada goldenrod) making up the plant community with minimal native cover (bergamot).

Herbicide Application

Application Timing	A	B
Date	August 31, 2024 1:36 pm	Spring 2025
Equipment	CO ₂ single nozzle sprayer (50 GPA)	
Nozzles & spacing	One TeeJet 8002 nozzle	
Regulator PSI	36	

Application Notes

Each tree received a foliar application as an individual plant treatment approach, applying herbicide to all leaves to the point of runoff.

Weather Data

Application Timing	A	B
Weather Station	KWIMADIS233	
Temperature	83.6°F	-
Wind Speed and Direction	2.3 mph NNW	-
Relative Humidity	50%	-
Cloud Cover	5%	-
Previous Rain Event Within 48 Hours	0.84 inches – August 30, 2024 3:00 am	-
When ≥ 0.25 inches of precipitation occurred after treatment	0.30 Inches – September 20, 2024 1:30 am	-



Research Plot Information

Plot Dimensions	Single Tree
Design	Randomized Complete Block, 6 blocks
Soil Type	Sable silty clay loam
Soil Characteristics	29 % clay, 1.96 % organic matter, 7.0 pH, 5 % slope

Plants Present at Application – Developmental Stage

Species	Average Height (in)	Phenological Stage
Box Elder (<i>Acer negundo</i>)	5 feet	Vegetative (leafed out)



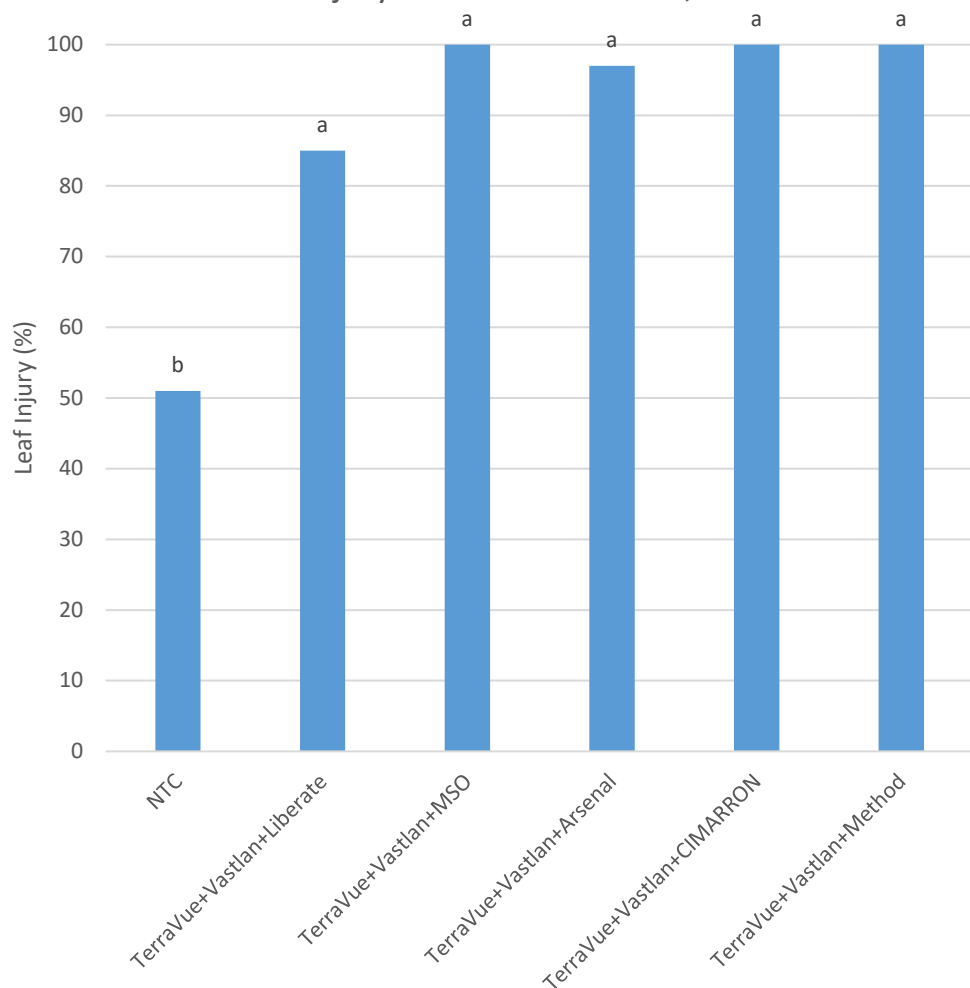
Pictures above show the same box elder plant treated with TerraVue+Vastlan. The picture on the left shows one day before application and the picture on the right is 38 days after application.

Index of Ratings and Results

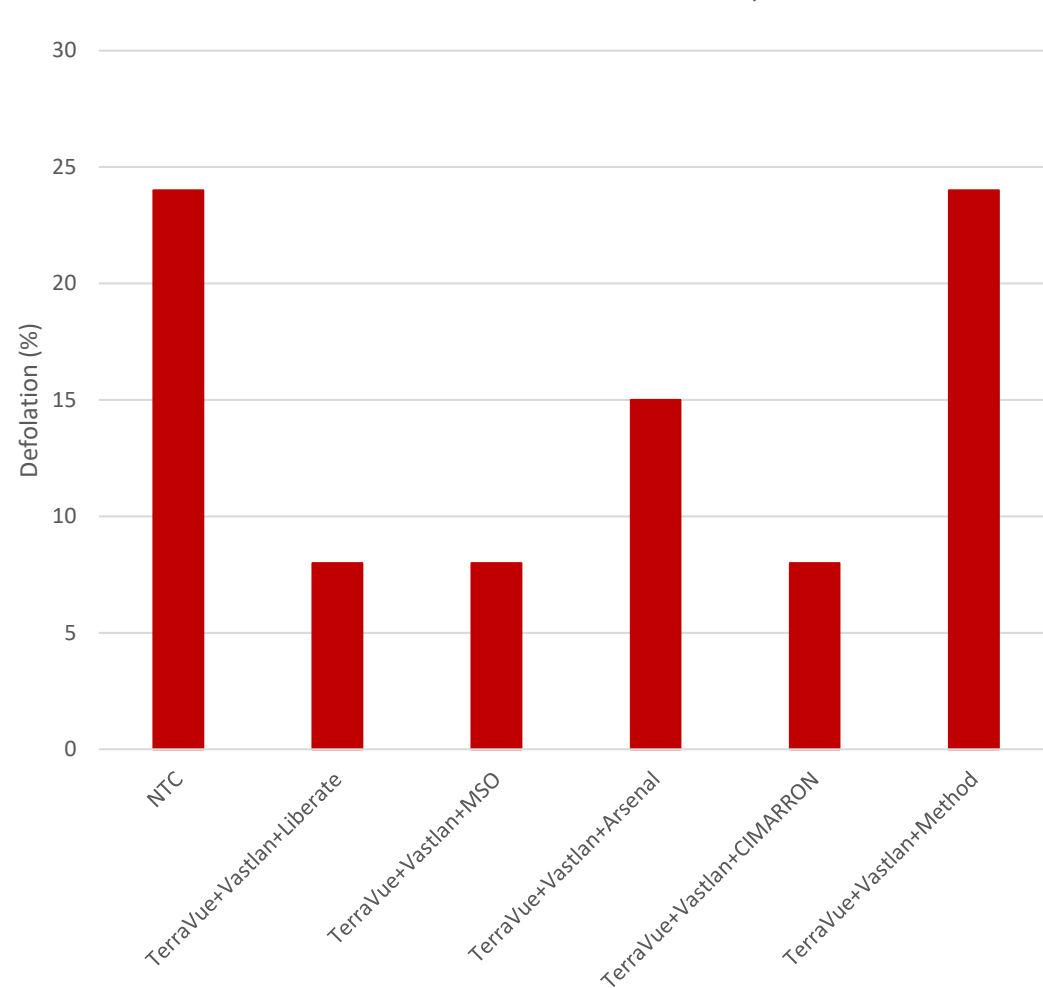
Pre-treatment rating – August 30, 2024.....	8
Pre-treatment rating – August 30, 2024 Continued	9
38 Day after treatment (DAT) – October 8, 2024	10

Graphs only show data from application timing A.

Leaf Injury 38 DAT - October 8, 2024



Defoliation 38 DAT - October 8, 2024



Bars labeled with the same letter do not significantly differ ($P=0.05$, LSD)



Results:

Pre-treatment rating – August 30, 2024					
Trt. No.	Treatment	Rate	Application Timing	Box Elder Height Category (1-3) ¹	Box Elder Stem Type Category (1-2) ²
1	NTC	-	-	1.7 -	1.7 -
2	TerraVue Vastlan LIBERATE	0.18 oz /gal 2% v/v 0.5% v/v	A	2.3 -	2 -
3	TerraVue Vastlan MSO	0.18 oz /gal 2% v/v 0.1% v/v	A	2.8 -	2 -
4	TerraVue Vastlan Arsenal LIBERATE	0.18 oz/gal 2% v/v 0.5% v/v 0.5% v/v	A	2 -	1.7 -
5	TerraVue Vastlan CIMARRON LIBERATE	0.18 oz/gal 2% v/v 0.04 oz/ gal 0.5% v/v	A	2.7 -	2 -
6	TerraVue Vastlan Method 240 SL LIBERATE	0.18 oz/gal 2% v/v 0.25% v/v 0.5% v/v	A	2.2 -	1.8 -
Statistics ³					
Least Significant Difference (LSD) P=.05				0.70	0.40
Standard Deviation				0.61	0.34
Coefficient of Variation (CV)				26.04	18.76
Treatment Prob(F)				0.0678	0.1458

Pre-treatment rating – August 30, 2024 Continued

Trt. No.	Treatment	Rate	Application Timing	Box Elder Height Category (1-3) ⁴	Box Elder Stem Type Category (1-2) ⁵
7	TerraVue Vastlan LIBERATE	0.18 oz /gal 2% v/v 0.5% v/v	B	2.5 -	1.8 -
8	TerraVue Vastlan MSO	0.18 oz /gal 2% v/v 0.1% v/v	B	2.5 -	2 -
9	TerraVue Vastlan Arsenal LIBERATE	0.18 oz/gal 2% v/v 0.5% v/v 0.5% v/v	B	2.2 -	1.5 -
10	TerraVue Vastlan CIMARRON LIBERATE	0.18 oz/gal 2% v/v 0.04 oz/ gal 0.5% v/v	B	2.7 -	1.7 -
11	TerraVue Vastlan Method 240 SL LIBERATE	0.18 oz/gal 2% v/v 0.25% v/v 0.5% v/v	B	2.2 -	1.8 -
Statistics ⁶					
Least Significant Difference (LSD) P=.05				0.70	0.40
Standard Deviation				0.61	0.34
Coefficient of Variation (CV)				26.04	18.76
Treatment Prob(F)				0.0678	0.1458

⁴ For box elder heights a scale of 1-3 was used, with 1 being for plants 1-3 ft tall, 2 being 3-6 ft and 3 being taller than 6 ft

⁵ Box elder was split into two stem types: single and multi. A scale of 1-2 was used with 1 being for single stem and 2 for multi-stem

⁶ All statistical analyses were conducted in ARM software and assumptions of ANOVA were not evaluated.



38 Day after treatment (DAT) – October 8, 2024

Trt. No.	Treatment	Rate	Application Timing	Visual leaf injury (%)	Defoliation (%)
1	NTC	-	-	51 b	24 -
2	TerraVue Vastlan LIBERATE	0.18 oz /gal 2% v/v 0.5% v/v	A	85 a	8 -
3	TerraVue Vastlan MSO	0.18 oz /gal 2% v/v 0.1% v/v	A	100 a	8 -
4	TerraVue Vastlan Arsenal LIBERATE	0.18 oz/gal 2% v/v 0.5% v/v 0.5% v/v	A	97 a	15 -
5	TerraVue Vastlan CIMARRON LIBERATE	0.18 oz/gal 2% v/v 0.04 oz/ gal 0.5% v/v	A	100 a	8 -
6	TerraVue Vastlan Method 240 SL LIBERATE	0.18 oz/gal 2% v/v 0.25% v/v 0.5% v/v	A	100 a	24 -
Statistics ⁷					
Least Significant Difference (LSD) P=.05				27.93	21.76
Standard Deviation				23.49	18.30
Coefficient of Variation (CV)				26.46	126.67
Treatment Prob(F)				0.0072	0.3569

⁷ All statistical analyses were conducted in ARM software and assumptions of ANOVA were not evaluated.