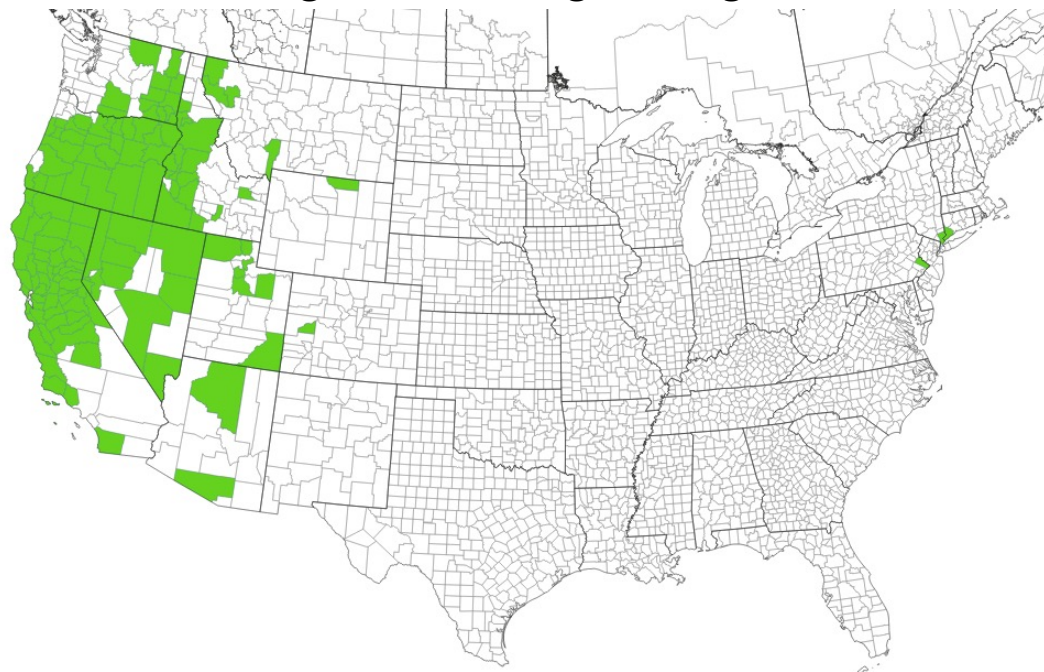




Medusahead (*Taeniatherum caput-medusae*)



- Annual grass with narrow leaves and bristly inflorescences
- Habitats it invades:
 - Grasslands
- Status
 - Wisconsin: Prohibited (not escaped here yet)
 - Not regulated in neighboring states

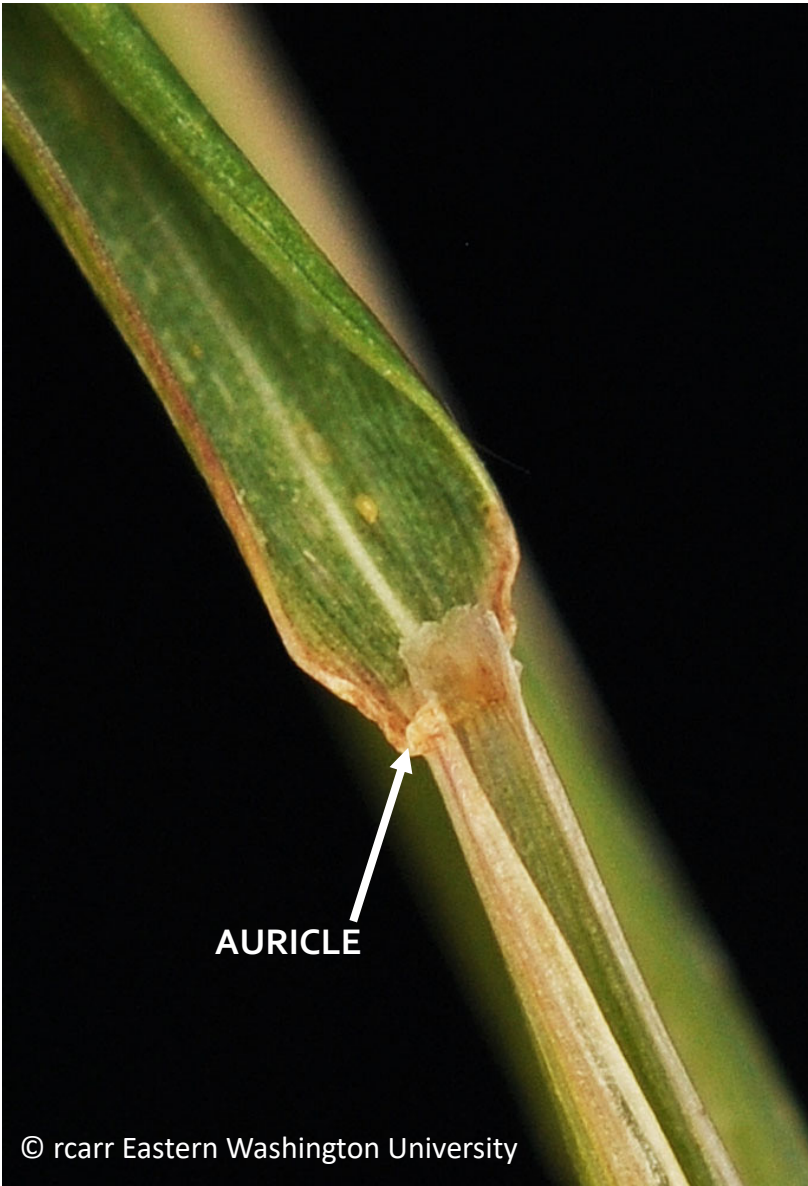




Medusahead (*Taeniatherum caput-medusae*)

Leaves alternate

- Plants 8-24" tall
- Leaves narrow, less than 0.13" wide; hairy or smooth
- Leaves with little "ears" (auricles)
- Leaves often inrolled



AURICLE



© rcarr Eastern Washington University



Medusahead (*Taeniatherum caput-medusae*)

Spikelets

- Inflorescence unbranched
- Spikelets borne in pairs along the inflorescence; late spring
- Spikelets 6-45 mm long with 2(-3) florets
- Lemmas and glumes with long awns





Medusahead look alike

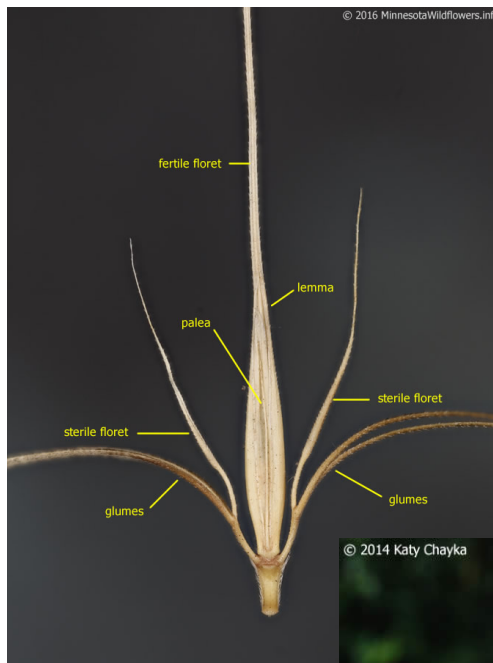
Medusahead resembles the related **native** wild ryes (*Elymus* spp.) and **non-native** foxtail barley (*Hordeum jubatum*).



© 2013 Katy Chayka



2016 © Peter M. Dziuk



© 2016 MinnesotaWildflowers.info

FOXTAIL BARLEY (*Hordeum jubatum*) (N-N) has spikelets with 3 florets (1 sessile, 2 stalked); its inflorescences break apart at maturity. Medusahead has spikelets with 2-3 sessile florets and inflorescences that don't break apart at maturity.



© 2014 Katy Chayka



spikelet

WILD RYES (*Elymus* spp.) (N) are **perennials** with **broad leaves**. Spikelets usually contain **more than one bisexual floret**.