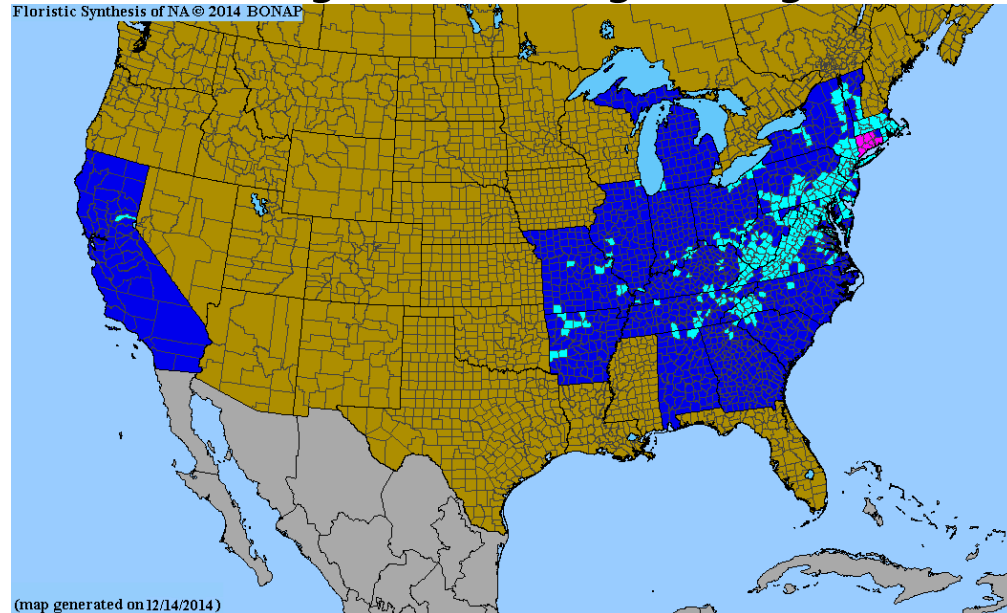


# Wineberry (*Rubus phoenicolasius*)



- Prickly, medium-sized shrub covered in glandular, reddish hairs
- Habitats it invades:
  - Forests
  - Fields
- Status
  - Wisconsin: Prohibited (not escaped here yet)
  - Not regulated in neighboring states

Floristic Synthesis of NA © 2014 BONAP



(map generated on 12/14/2014)





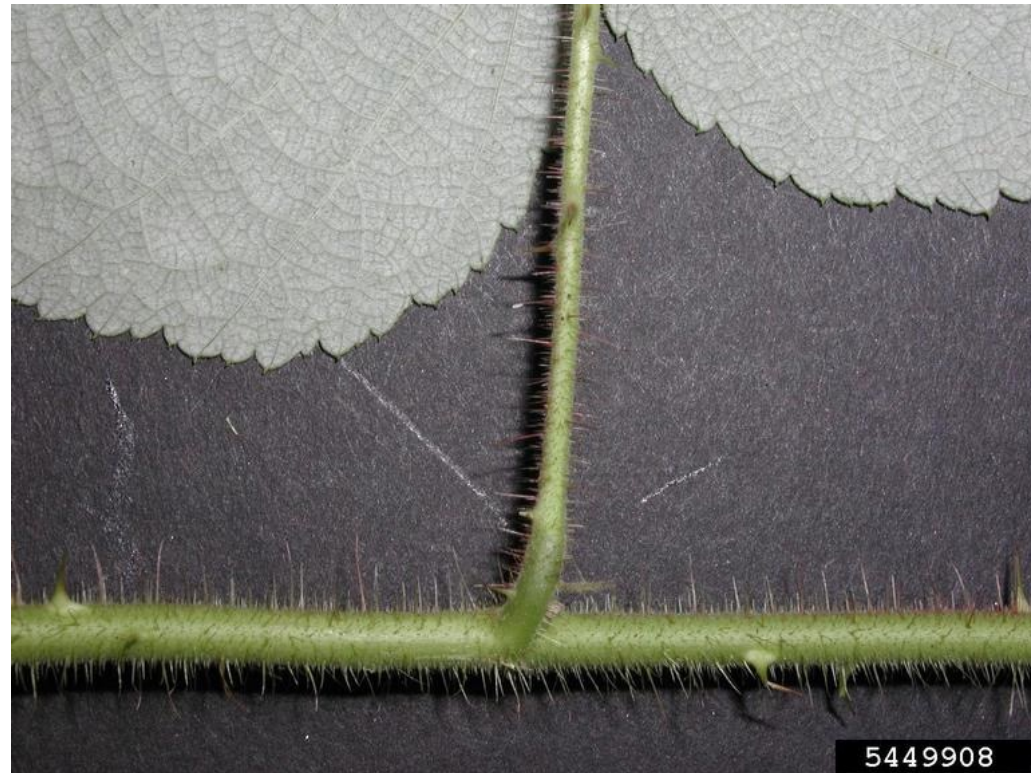
# Wineberry (*Rubus phoenicolasius*)

***Leaves alternate, trifoliate***

- 1.5-6" long, composed of 3 leaflets
- Leaflet margins toothed
- Leaf undersides white
- Stems with prickles and long-stalked glandular hairs



© Richard Gardner, Bugwood.org



© Leslie J. Mehrhoff, University of Connecticut, Bugwood.org



# Wineberry (*Rubus phoenicolasius*)



Renz Weed Science  
COLLEGE OF AGRICULTURAL & LIFE SCIENCES  
UNIVERSITY OF WISCONSIN-MADISON

## Flower/fruit

- Flowers are white, with very small petals; May-July.
- Sepals densely glandular
- Fruit is a juicy raspberry.



5449851



5449887

© Leslie J. Mehrhoff, University of Connecticut, Bugwood.org

© Leslie J. Mehrhoff, University of Connecticut, Bugwood.org



# Wineberry look alike

Wineberry (*Rubus phoenicolasius*) resembles the **native** raspberry (*Rubus idaeus*) in Wisconsin.

Like wineberry, the native raspberry (*Rubus idaeus*) also has leaf undersides that are white, but the **flower stalks and calyx have inconspicuous, yellowish glands mostly shorter than the prickles**. The latter's stems are also usually waxy.

Wineberry has white leaf undersides, while our native blackberries (*Rubus* spp.) have **green undersides**. The latter also lack long-stalked, reddish glandular hairs.



Native blackberry leaf underside  
©transformationalgardening.com



Stem and fruiting branch of native raspberry (*Rubus idaeus*)



2008 © Peter M. Dziuk