

# Callery pear (*Pyrus calleryana*)



- Small- to medium-sized tree with fragrant white flowers and upright branching
- Habitats it invades:
  - Roadsides
  - Grasslands
- Status
  - Wisconsin: Not Regulated
  - Regulated in: OH





# Callery pear (*Pyrus calleryana*)

*Leaves alternate, simple*

- 2-3" long, shiny, with toothed margins
- Leaf blade is thick, egg-shaped, and often has a prolonged tip
- Buds are woolly



# Callery pear (*Pyrus calleryana*)



Renz Weed Science  
COLLEGE OF AGRICULTURAL & LIFE SCIENCES  
UNIVERSITY OF WISCONSIN-MADISON

## *Flower/fruit*

- Flowers are white, showy, fragrant, and borne before leaf-out; April-May
- Fruit is brownish and resembles a small pear or apple; they are gritty in texture and contain numerous seeds



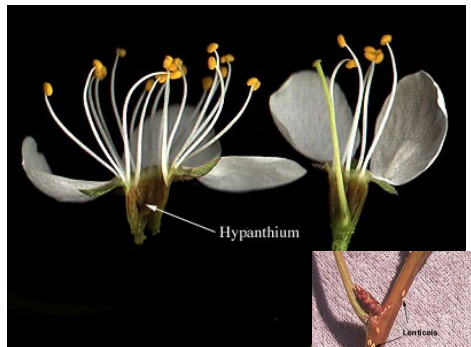
© Leslie J. Mehrhoff, University of Connecticut, Bugwood.org



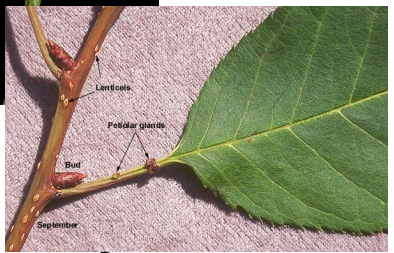
© Leslie J. Mehrhoff, University of Connecticut, Bugwood.org

# Callery pear look alike

Callery pear (*Pyrus calleryana*) can be confused with many other members of the Rose Family (Rosaceae) such as serviceberries (*Amelanchier* spp.), plums/cherries (*Prunus* spp.), hawthorns (*Crataegus* spp.), and apples (*Malus* spp.). Characters of the flowers and leaves will help to separate them.



© Mike Clayton



© Oregon State University

**PLUMS/CHERRIES** (left) have flowers that contain a single style. The ovary is superior, and the floral cup (hypanthium) is **not** fused to the pistil. The leaves are not glossy and are usually not as rounded at the bases; they have small glands at the base. The fruits contain one seed.



**SERVICEBERRIES** (right) have petals that are twice as long as wide and thin, dull leaves. The flower clusters have a central axis.

**HAWTHORNS** (left) have leaves that are coarsely-toothed, sometimes with small lobes. They also have large thorns and flower after leaves have formed.

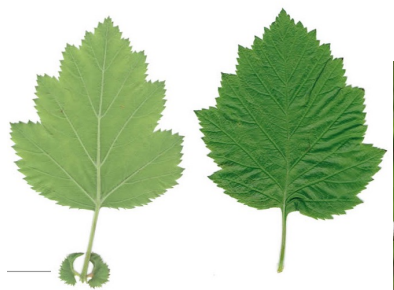


2017 © Peter M. Dziuk

**APPLES** (right) have thin, dull leaves, flower clusters without a central axis, and fruit flesh that is not gritty. They generally flower after leaves have formed.



© 2017 Katy Chayka



© 2018 Katy Chayka



© 2018 Katy Chayka

# Callery pear look alike

Callery pear (*Pyrus calleryana*) can be confused with many other members of the Rose Family (Rosaceae) such as serviceberries (*Amelanchier* spp.), plums/cherries (*Prunus* spp.), hawthorns (*Crataegus* spp.), and apples (*Malus* spp.). Characters of the flowers and leaves will help to separate them.

Species	Leaves	Branches	Flowers	Fruit
Callery pear ( <i>Pyrus calleryana</i> ) I	<b>Glossy, leathery;</b> finely toothed margins	<b>Branches usually strongly upright;</b> thorns sometimes present	Floral cup (hypanthium) fused to the pistil; multiple styles. <b>Flowers developing before the leaves.</b>	<b>Brown, gritty in texture,</b> multiple seeds
Cherries/plums ( <i>Prunus</i> spp.) N	<b>Dull to somewhat shiny, thin;</b> margins finely toothed	Branches spreading or somewhat drooping; thorns rarely present	<b>Floral cup (hypanthium) not fused to the pistil; one style.</b> Flowers developing before or after the leaves.	Red or dark purple, juicy, <b>one seed</b>
Serviceberries ( <i>Amelanchier</i> spp.) N	Dull, thin; margins finely or somewhat coarsely toothed	Branches upright or spreading, <b>multiple trunks usually present;</b> thornless	Floral cup (hypanthium) fused to the pistil; multiple styles. Flowers developing with the leaves.	Reddish to dark purple, somewhat juicy, multiple seeds
Hawthorns ( <i>Crataegus</i> spp.) N	Dull, thin; <b>margins coarsely toothed and often lobed</b>	Branches widely spreading, the <b>crown often flat-topped;</b> thorns well-developed	Floral cup (hypanthium) fused to the pistil; multiple styles. <b>Flowers developing after the leaves.</b>	Red, somewhat juicy, multiple seeds
Apples ( <i>Malus</i> spp.) N/N-N	Dull, thin; <b>margins coarsely toothed and sometimes lobed</b>	Branches spreading; thornless (rarely with thorns)	Floral cup (hypanthium) fused to the pistil; multiple styles. Flowers developing with the leaves.	Red, somewhat juicy, multiple seeds