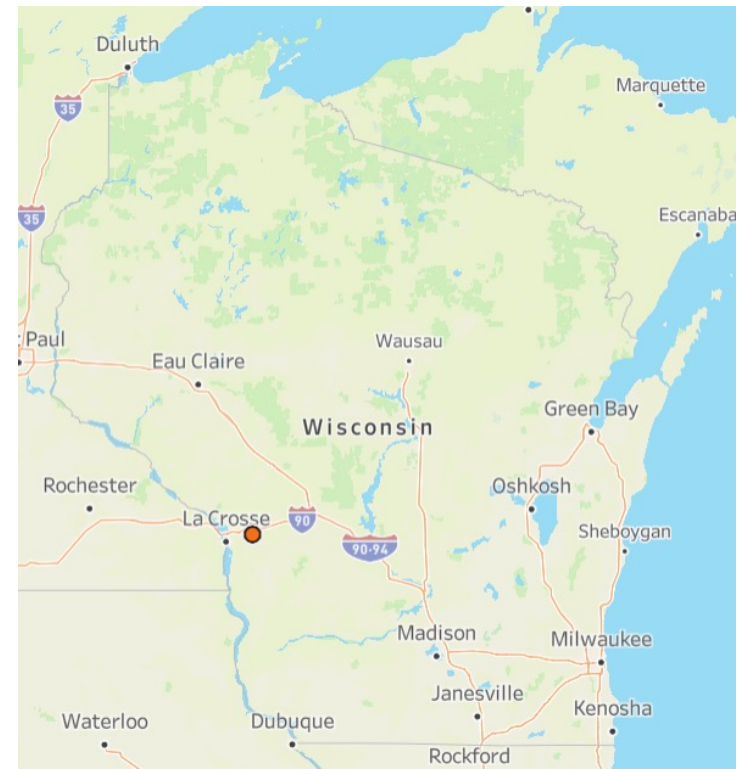
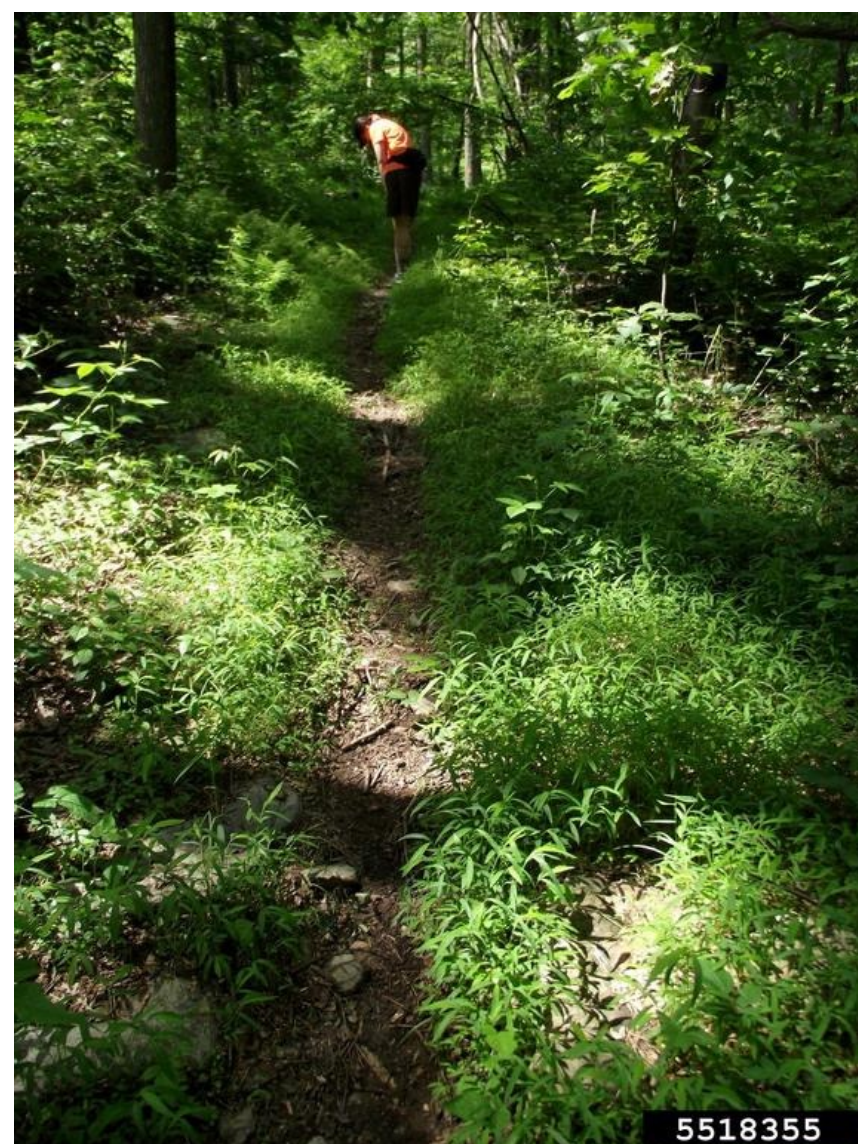


Japanese stiltgrass (*Microstegium vimineum*)



Renz Weed Science
COLLEGE OF AGRICULTURAL & LIFE SCIENCES
UNIVERSITY OF WISCONSIN-MADISON

- Short, annual grass that carpets forest understories
- Habitats it invades:
 - Forests
- Status
 - Wisconsin: Prohibited
 - Regulated in: IN, OH



Japanese stiltgrass (*Microstegium vimineum*)



Renz Weed Science
COLLEGE OF AGRICULTURAL & LIFE SCIENCES
UNIVERSITY OF WISCONSIN-MADISON





Japanese stiltgrass (*Microstegium vimineum*)

Leaves alternate

- Plants 1-3' tall; leaves 1.2-3.9" long
- Stems delicate, like a mini bamboo
- Leaves with a white midvein, tapered at both ends, smooth or sparsely hairy

5483957



5483966



Japanese stiltgrass (*Microstegium vimineum*)



Renz Weed Science
COLLEGE OF AGRICULTURAL & LIFE SCIENCES
UNIVERSITY OF WISCONSIN-MADISON

Spikelets

- Inflorescence with 2-4 branches
- Spikelets borne in pairs: one stalked, one not
- Spikelets 3.7-6.5 mm long with 1-2 florets; flowering late summer-fall
- Lemmas with long awns



© Douglas Goldman, USDA [CC BY-NC 4.0](https://creativecommons.org/licenses/by-nc/4.0/)



© Leslie J. Mehrhoff, University of Connecticut, Bugwood.org

5483947

Japanese stiltgrass look alike



Japanese stiltgrass (*Microstegium vimineum*) is easily confused with the **native** white grass (*Leersia virginica*). They differ in many readily observable characters. White grass is a **perennial** with **knotty rhizomes**, it has **hairy nodes**, the **leaf midvein is not white**, and it flowers earlier. White grass has a **panicle inflorescence** with more branches, **spikelets are not paired**, **spikelets lack glumes**, and the **lemmas lack awns and are covered in hooked hairs**.



2016 © Peter M. Dziuk



2015 © Peter M. Dziuk



© 2015 MinnesotaWildflowers.info